

IN THIS ISSUE

ABOUT US.....Page 1
 PERFORMANCE.....Page 2
 FINANCE.....Page 3
 FUTURE CHALLENGES.....Page 4

MISSION STATEMENT

*Our Educational Community
 Prepares all Students for Life,
 Promotes Excellence, and Provides Support*

LEADERSHIP

Jon J.P. Fernandez
Superintendent

Taling M. Taitano
*Deputy Superintendent,
 Finance & Administrative Services*

Joseph L.M. Sanchez
*Deputy Superintendent,
 Curriculum & Instructional Improvement*

Kelly R. Sukola
*Deputy Superintendent
 Educational Support & Community Learning*

Stacey A. Sahagon
*Deputy Superintendent
 Assessment & Accountability*

GUAM EDUCATION BOARD

Chair

Mark B. Mendiola

Vice-Chair

Maria Gutierrez

Members

Peter Alexxis D. Ada

Lourdes Benavente

Robert Crisostomo

James A. Lujan

Dr. Ronald L. McNinch

Lourdes B. San Nicolas

Vacant

Ex-Officio Members

Hacie San Jose, IBOGS Representative

Mark D. McCarthy, GFT Representative

Mayor Rudy Matanane, Representative

Executive Secretary

Jon J.P. Fernandez

ABOUT US

GDOE is a single unified, and accredited school district consisting of Kindergarten through 12th grade; administering Head Start, pre-Kindergarten GATE programs, and piloting pre-Kindergarten classes at selected schools. Our 26 elementary, 8 middle, 6 high and 1 alternative schools serve nearly 31,000 students and are managed by the Superintendent, who is the chief executive officer for the department. He is also Executive Secretary of the 12-member Guam Education Board. GDOE is accredited by the Western Association of Schools and Colleges, and uses standards-based or criterion-referenced testing to assess student progress: ACT Aspire, based on the Common Core Standards in English/Language Arts & Math for grades 3-10; and a locally developed Standards-Based Assessments (SBA) for grades 1-12 in English/Language Arts, Math, Science and Social Studies content areas.

GDOE STATE STRATEGIC PLAN

- Goal # 1 All students will graduate from high school prepared to pursue post-secondary education on or off-island or to assume gainful employment with the private or public sector
- Goal # 2 All students will successfully progress from grade to grade and from one level of schooling to another in order to maximize opportunities to successfully graduate from high school
- Goal # 3 All Guam Department of Education personnel will meet high standards for qualifications and on-going professional development and will be held accountable for all assigned responsibilities
- Goal # 4 All members of the Guam Department of Education Community will establish and sustain a safe, positive and supportive environment
- Goal # 5 All Guam Department of Education operations activities will maximize the critical uses of limited resources and meet high standards of accountability

By the Numbers SY 2017-2018

(as of September 30, 2017)

Enrollment

*Students are counted in their school population.

| | |
|--------------|---------------|
| *Headstart | 530 |
| * Pre-K | 72 |
| Elementary | 13,695 |
| Middle | 6,532 |
| High | 9,714 |
| Alternative | 171 |
| Total | 30,112 |

Personnel By Funding

(as of September 30, 2017)

| | |
|--------------|--------------|
| Local | 2,970 |
| Federal | 819 |
| Fed/Local | 52 |
| Total | 3,841 |



PERFORMANCE

| | GRADUATION | | DROPOUT | | | |
|---------------|--------------|--------------|------------|-------------|------------|-------------|
| | SY15-16 | SY16-17 | SY15-16 | SY15-16 | SY16-17 | SY16-17 |
| High School | Number | Number | Number | Rate (%) | Number | Rate (%) |
| G. Washington | 355 | 323 | 56 | 3.1% | 39 | 2.2% |
| J.F. Kennedy | 365 | 368 | 29 | 1.5% | 9 | 0.4% |
| Okkodo | 346 | 322 | 33 | 1.7% | 28 | 1.6% |
| S. Sanchez | 352 | 371 | 59 | 3.3% | 33 | 1.6% |
| Southern | 346 | 395 | 45 | 2.9% | 69 | 4.4% |
| Tiyan | 181 | 220 | 61 | 4.7% | 32 | 2.2% |
| JP Torres | n/a | 55 | n/a | n/a | 33 | 14.9% |
| Total | 1,945 | 2,054 | 283 | 2.8% | 243 | 2.4% |

School Stats

- 2,054 graduates in SY2016-17, a 109 increase or 5.6% from the previous school year.
- Cohort graduation rate up 3% in SY2016-17 from 79% to 82%.
- 243 students dropped out, 40 fewer or 0.4% less students than in SY2015-16.
- Behavior incidences in SY2016-17 increased in all top 5 areas (depicted in table below) except defiance/disrespect/insubordination.
- 1,993 children with disabilities served or 5.94% of total enrollment as of October 1, 2017 under GDOE's Division of Special Education Part B Program.
- 1,406 classroom teachers with masters or professional certifications, 305 with basic or initial certification, and 94 with either standard or temporary certification.
- School Year 2016-17 marked the third year of ACT Aspire summative assessment of student performance. For complete results go to www.gdoe.net

SCALE SCORES: ACT Aspire Benchmark, GDOE Average

| SY16-17 ACT Aspire | Grade | English | Reading | Math |
|------------------------------|-----------|------------|------------|------------|
| ACT Aspire Benchmark | 3 | 413 | 415 | 413 |
| GDOE Average | 3 | 413 | 408 | 409 |
| GDOE versus Benchmark | | 0 | -5 | -4 |
| ACT Aspire Benchmark | 4 | 417 | 417 | 416 |
| GDOE Average | 4 | 416 | 411 | 412 |
| GDOE versus Benchmark | | -1 | -6 | -4 |
| ACT Aspire Benchmark | 5 | 419 | 420 | 418 |
| GDOE Average | 5 | 418 | 413 | 414 |
| GDOE versus Benchmark | | -1 | -7 | -4 |
| ACT Aspire Benchmark | 6 | 420 | 421 | 420 |
| GDOE Average | 6 | 420 | 414 | 415 |
| GDOE versus Benchmark | | 0 | -5 | -5 |
| ACT Aspire Benchmark | 7 | 421 | 423 | 422 |
| GDOE Average | 7 | 422 | 416 | 413 |
| GDOE versus Benchmark | | +1 | -7 | -9 |
| ACT Aspire Benchmark | 8 | 422 | 424 | 425 |
| GDOE Average | 8 | 423 | 419 | 415 |
| GDOE versus Benchmark | | +1 | -5 | -10 |
| ACT Aspire Benchmark | 9 | 426 | 425 | 428 |
| GDOE Average | 9 | 422 | 417 | 415 |
| GDOE versus Benchmark | | -4 | -8 | -13 |
| ACT Aspire Benchmark | 10 | 428 | 428 | 432 |
| GDOE Average | 10 | 426 | 419 | 417 |
| GDOE versus Benchmark | | -2 | -9 | -15 |

| TRUANCY SY 16-17 | Elementary | | Middle | | High | |
|-------------------------------------|------------|--------|----------------|----------------|------|--------|
| | Male | Female | Male | Female | Male | Female |
| Habitual-12 & More Absences | 69 | 50 | 63 | 48 | 117 | 69 |
| Top 5 Behavior Incidences | | | SY15-16 | SY16-17 | | |
| Defiance/Disrespect/Insubordination | | | 1,385 | 1,166 | | |
| Dress Code Violation | | | 923 | 1,225 | | |
| Physical Aggression | | | 836 | 997 | | |
| Skipping | | | 968 | 1,303 | | |
| Use & Possession of Tobacco | | | 867 | 1,136 | | |

FINANCES

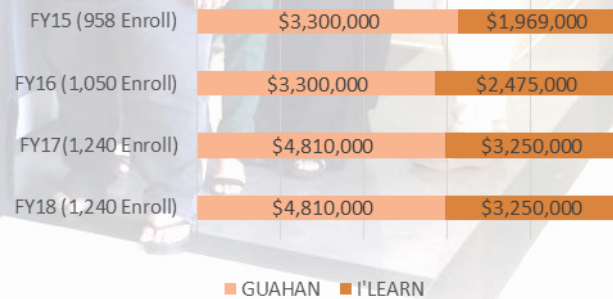
| | FY2017 | FY2016 |
|---|--------------|--------------|
| Total Revenues | 332,551,982 | 321,973,475 |
| Total Expenditures | 342,014,852 | 325,702,805 |
| Excess (deficiency) of revenues over (under expenditures) | (9,462,870) | (3,729,330) |
| Total other financing sources (used), net | 26,995,762 | 4,947,008 |
| Net change in fund balances | 17,532,892 | 1,217,678 |
| Fund balances (deficit) at beginning of the year | (12,662,092) | (13,879,770) |
| Fund balance (deficit) at end of year | 4,870,800 | (12,662,092) |

| Grantor | FY2017 | FY2016 |
|---------------------------------------|---------------------|---------------------|
| U.S. Dept. of Agriculture | \$ 12,732,144 | \$ 11,728,876 |
| U.S. Dept. of Defense (JROTC) | \$ 436,827 | \$ 418,432 |
| U.S. Dept. of Education | \$ 40,322,092 | \$ 40,620,424 |
| U.S. Dept. of Health & Human Services | \$ 2,853,063 | \$ 2,741,585 |
| U.S. Dept. of Interior | \$ 9,933,098 | \$ 8,929,495 |
| Total Federal Expenditures | \$66,277,224 | \$64,438,812 |

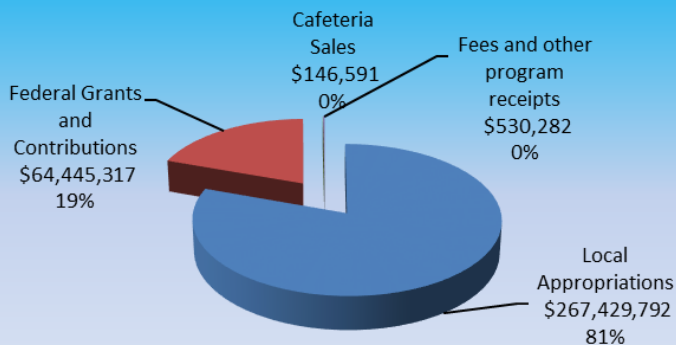
FY2017 Financial Highlights

- Revenues ↑ by \$10.5M or 3.2% compared to FY16: \$4.3M increase in appropriations, \$7.1M federal grants and contributions offset by \$53K reduction in cafeteria sales and \$886K contributions, fees & receipts.
- Expenditures ↑ by \$16.3M or 5% compared to FY16: \$22M increase in capital acquisitions (Tiyan properties), \$2.2M charter schools, \$1M utilities offset by \$3.2M decrease in personnel, \$5M in capital lease payments, \$770K in operations categories.
- Personnel expenses accounted for \$223.6M (\$191.1M local and \$32.5M federal) or 65.4% in FY17 compared to \$226M (\$193.3M local and \$33.5 federal) or 69.4% in FY16.
- Federally funded expenditures accounted for \$66.2M or 19% total expenditures compared to \$64.4M in FY16, an increase of 2.85% or \$1.83M.
- FY17 Utilities accounted for 4.4% of total expenditures or \$15.03M, an increase of \$1.09M compared to FY16; increased costs in power and water attributable to rate increases in both areas.
- Authorized funding for charter schools increased \$1K per student capped at 1,240 and netted \$8M in FY17 expenses.
- GDOE ended FY17 with a \$4.9M surplus compared to deficit (losses) from FY 2014 to FY 2016.

Charter School Annual Budgets

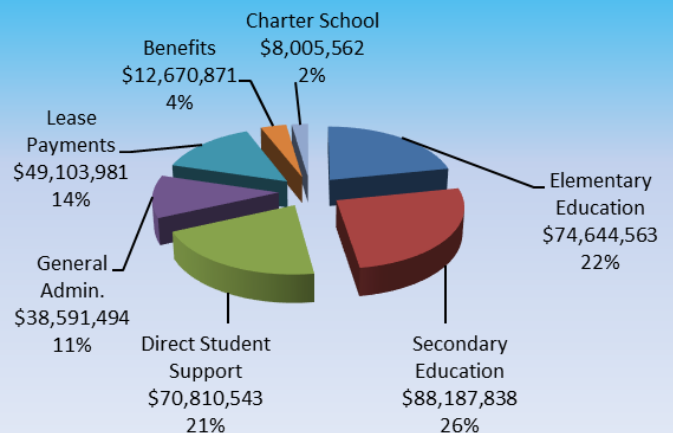


Revenue Breakdown FY 2017



*Numbers may not exactly match the chart above due to rounding

Expenditures Breakdown FY 2017



FUTURE CHALLENGES

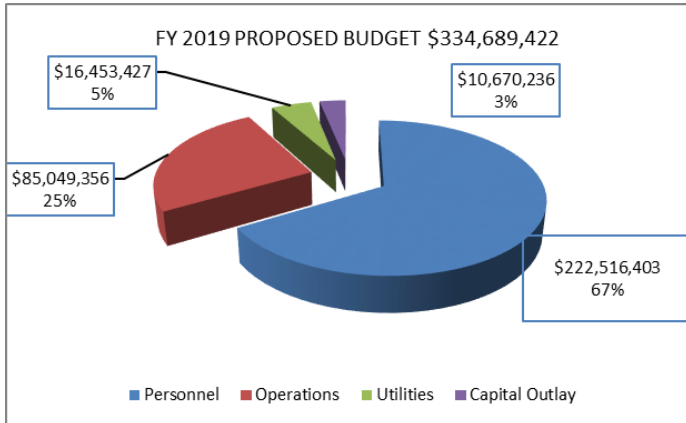


Federal Funding

U.S. Education Secretary to implement Every Student Succeeds Act in FY2017 grant cycle. \$31.1M in Consolidated Grants may be available in FY2018. Flat funding in SPED grants makes it difficult to maintain same level of services due to organic growth in personnel costs and contracts.

| FEDERAL FUNDS | FFY 18 | ANTICIPATED FFY 19 |
|-------------------------|--------------|--------------------|
| Consolidated Grants | \$28,860,399 | \$31,192,520 |
| Head Start | \$3,052,923 | \$3,105,453 |
| SPED Part B | \$14,120,991 | \$14,120,991 |
| SPED Part C | \$1,489,809 | \$1,520,218 |
| Child Nutrition Program | \$15,261,201 | \$16,004,664 |

WHAT LIES AHEAD FY2019 Budget Request = \$334M



Power Purchase Agreement Pending Approval

Initiated in 2015, the Power Purchase Agreement between Guam Education Financing Foundation and GDOE to install solar panels for Okkodo High, Astumbo Middle, Ligan and Adacao elementary schools continues to be assessed and scrutinized by Attorney General who must approve the PPA prior to implementation.

Tiyan Headquarters

New 3-storied 82,300 square foot building in Tiyan to consolidate most of GDOE administrative operations into one single location by FY2018 year end.

Tax Cut & Jobs Act (TCJA) Impacts

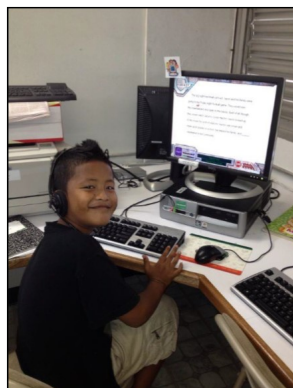
While \$245M FY18 local budget increased by \$3M, GDOE cash allotments were cut by \$12.3M as part of a government-wide Fiscal Realignment Plan in response to projected revenue losses from the federal TCJA. PL 34-87 also imposed temporary increase in Business Privilege tax to offset the TCJA balance in projected GF revenues losses.

What We're Working On

- ⇒ Procurement to reconstruct Simon Sanchez High to restart under new bid specifications.
- ⇒ Changes in elementary attendance areas for SY18-19; and a feasibility study for a central middle school in Tamuning-Tumon-Harmon area.
- ⇒ Assessment of compulsory school age increase, from 16 to 18 under PL 34-104.

FY2019 and Beyond

Bill 323-34 (FY19 Budget Act) pending Governor's approval; if enacted GDOE faces \$15M in cuts from \$245M to \$230M, and the opening of a third charter school.



We appreciate your feedback.

Please contact us if you would like to see other information included in our Citizen Centric Report. Guam Department of Education, 500 Mariner Ave Barrigada, Guam 96913 Email: Superintendent@gdoe.net

